

## EPDM cellular rubber

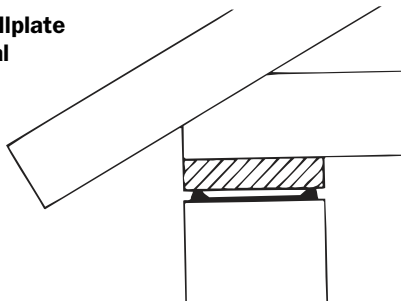
- Takes up movement in joints and construction elements.
- Provides weatherproofing and thermal insulation.
- Thanks to strip profile and resilience of cellular rubber the sill sealing strip provides an excellent seal even under slight compression.
- Made from black EPDM cellular rubber with closed cells and continuous skin, to ensure high quality.
- Exceptional resistance to ageing.
- Design of profile/strip is copyrighted and patent is pending.
- Used as soundproofing between wall and roof.
- Replaces materials such as plastic, corrugated paper, mineral wool or glass wool.



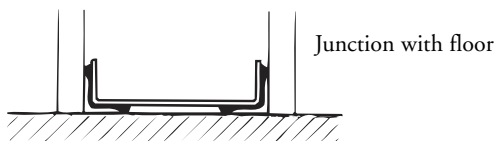
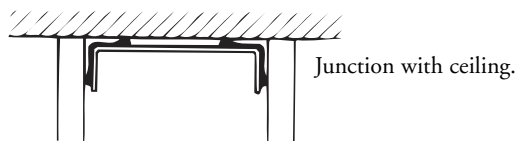
### Applications:

- Sill seal
- Wallplate seal
- Seal between wall or roof sections, SIPS
- Soundproofing

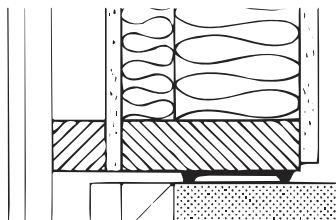
### Wallplate seal



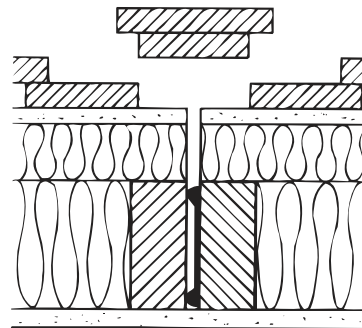
### Soundproofing



### Sill seal



### Seal between wall sections

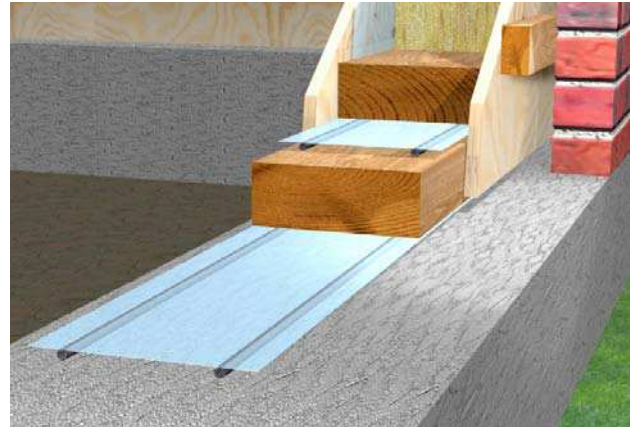
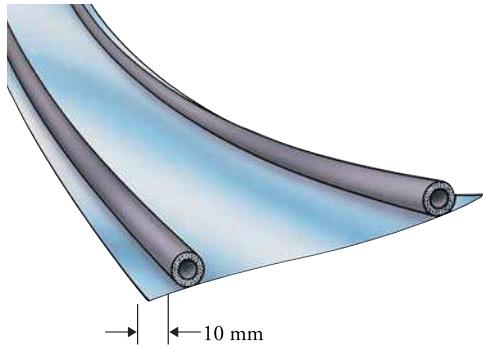


Product no.	Dimensions mm width x height	Each length m	Pack. qty. Box
<b>48053840</b>	35 x10	50	400
<b>48055800</b>	45 x10	50	350
<b>48053970</b>	60 x10	50	400
<b>48055810</b>	70 x10	50	250
<b>48053980</b>	80 x10	50	250
<b>48055820</b>	95 x10	25	300
<b>48053990</b>	110 x10	25	300
<b>48054000</b>	120 x10	25	150
<b>48059560</b>	140 x10	25	150
<b>48060630</b>	165 x10	25	125

In bold = Stock item  
Not stock item

# Ground/foundation - Wall section and Sill sealing strip

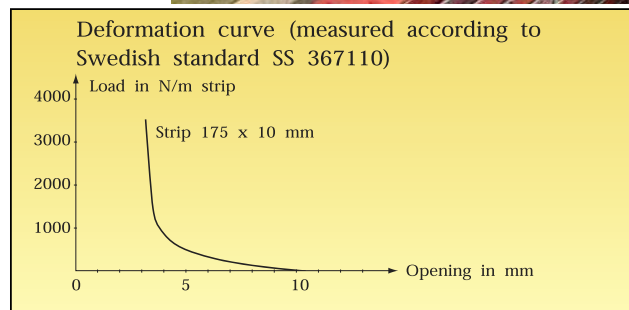
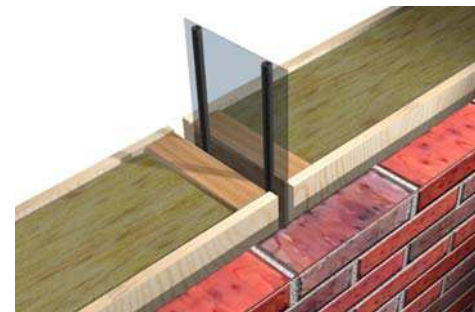
5:41



Sealing with rubber strips offers numerous benefits. They seal out moisture, cold, wind and noise. Thanks to the closed cell structure they also provide good thermal insulation. They are also water-repellent. These sealing strips have good resistance to settling and excellent ageing resistance.

The strip is fitted with the vapour barrier upwards. This simplifies the fitting and adjustment of wall sections as the foil has a low friction coefficient.

- Rubber strips can be individually positioned on vapour barrier to suit dimensions of wall studs.
- Vapour barrier widths up to 500 mm provide a barrier to moisture under the full thickness of the wall and allow overlapping with plastic floor barrier.
- Recommended when erecting pre-assembled modular wall or roof sections and SIPS.



Profile	Product no.	Dimensions mm width x height	Colour	Pack.	Qty. m	Pack. qty. m
	484157924	75 x 10	Black / transp.	Bundle	25	250
	484157917	87 x 10	Black / transp.	Bundle	25	300
	<b>484157908</b>	<b>100 x 10</b>	<b>Black / transp.</b>	<b>Bundle</b>	<b>25</b>	<b>250</b>
	<b>484157903</b>	<b>125 x 10</b>	<b>Black / transp.</b>	<b>Bundle</b>	<b>25</b>	<b>200</b>
	<b>484157905</b>	<b>150 x 10</b>	<b>Black / transp.</b>	<b>Bundle</b>	<b>25</b>	<b>200</b>
	<b>484157916</b>	<b>175 x 10</b>	<b>Black / transp.</b>	<b>Bundle</b>	<b>25</b>	<b>150</b>
	484157933	200 x 10	Black / transp.	Bundle	25	150
	484157934	250 x 10	Black / transp.	Bundle	25	150
	484157926	300 x 10	Black / transp.	Bundle	25	150
	484157936	400 x 10	Black / transp.	Bundle	25	100
	484157915	500 x 10	Black / transp.	Bundle	25	100
	<b>484157902</b>	<b>60 x 10</b>	<b>Black / transp.</b>	<b>Bundle</b>	<b>25</b>	<b>400</b>

In bold = Stock item  
Not stock item