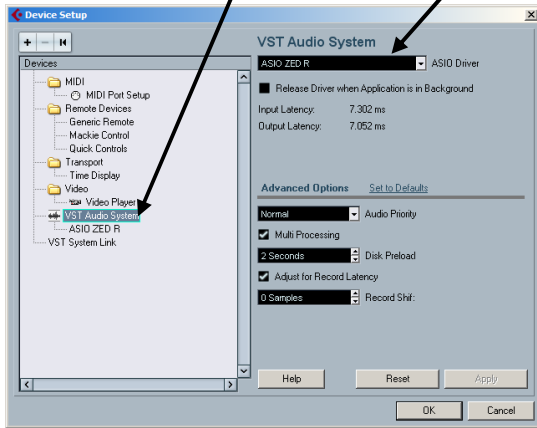


# Quick Setup Guide For ZED R16 and Cubase SX

Once your ZED R16 is correctly installed and Connected to your computer you can start by opening Cubase SX.

First you need to select the ZED R as the Primary sound driver to do this go to: '**Devices/Device Setup/ VST Audio System**' Select **ZED R** from the drop-down menu.

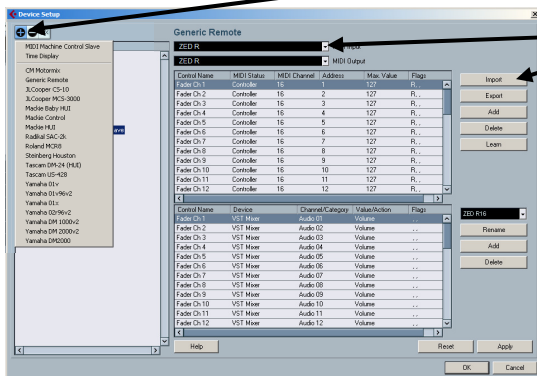


The Cubase Project folder provided contains 1 project file containing a basic setup for using a ZED R with Cubase SX. It is designed to be a basic guide to get started using ZED R with Cubase.

The folder also contains a MIDI template created for use with ZED R and Cubase.

First open the Cubase Project file: File/Open '**ZEDR16 16In16Out.cpr**'

To import the MIDI settings navigate to Menu Bar: **Devices/ Device Setup/Add Device** Select: **Generic Remote**



Set Generic remote MIDI Input to **ZED R**

To import the MIDI template go to Import and select the **ZED R16 MIDI MAP.XML** file from the Cubase folder.

## SETTING UP CUBASE TO RECEIVE MMC DATA

**Note: Slave MMC is only available in the full Version of Cubase SX**

First navigate to Menu Bar:

**Transport/Project Synchronisation**

Turn on the MMC Active button

Then in the MMC Input drop down menu select **ZED R**

Make sure MMC Device ID is set to the same MIDI channel the **ZED R** is set to or if not sure select **ALL**.

Then navigate to Menu Bar:

**Devices/ Device Setup**

Click on Add Device from the top left of the window and select MIDI Machine Control Slave

Select **ZED R** as the MIDI input from the Drop-Down Menu.

