

CONNECTING TWO DESKS TOGETHER XP/Vista

Microsoft Windows XP & Vista:

Install the ZED driver following the procedure in the user guide or on the website.

Ensure the switches on the back of the ZED-R16s are set to Firewire. Connect each mixer individually to the computer, again following the installation procedure. It is a good idea to give each mixer a unique name by using the Change Device NickName feature in the driver control panel. Here, we have named the two ZED-R16s Mixer 1 and Mixer 2.

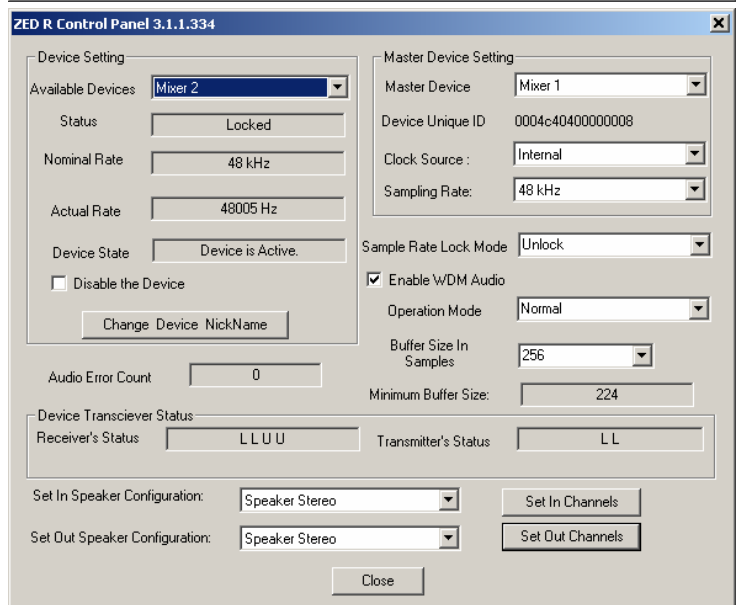
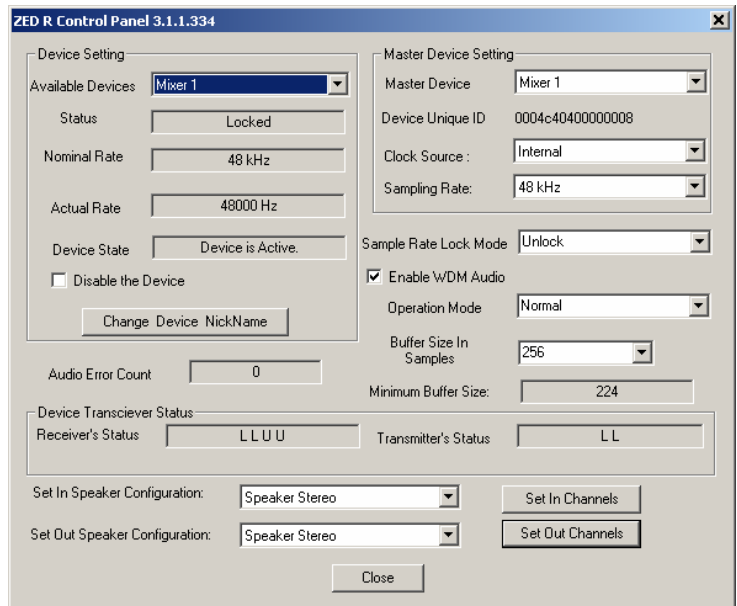
Now with both ZED-R16s powered but disconnected, connect the first ZED-R16 to the computer. Wait for the device connection arrow to appear in the system tray at the bottom of the screen, then connect the second ZED-R16 to the first one using the FireWire ports as in the diagram.

Open up the driver control panel and check that both ZED-R16 devices are connected and locked. This can be checked by switching between the Available Devices.

If either of the devices is not locked, try switching the Master Device between the two different mixers and then rechecking that the Available Devices are both locked in the Status box. If they still won't lock try increasing the buffer size or switching to Safe Modes using the Operation Mode menu.

The Zed R with the lowest Device Unique ID will be set up with CH 1 to 26. The channel settings will be:

Mixer (1 = Lowest ID)	FireWire Channels
1 Inputs 1-16	1-16
1 Master L-R	17-18
1 ADAT 1-8	19-26
2 Inputs 1-16	27-42
2 Master L-R	43-44
2 ADAT 1-8	45-52



For subsequent power up in this set-up, power the mixer connected the computer first, waiting a few seconds, then power the second mixer.

